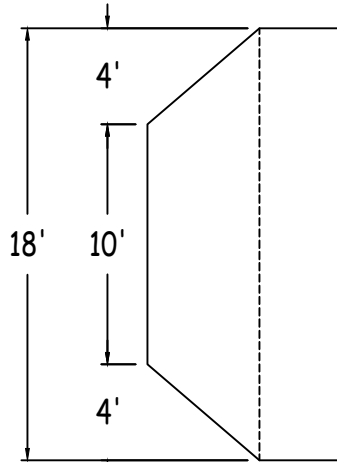
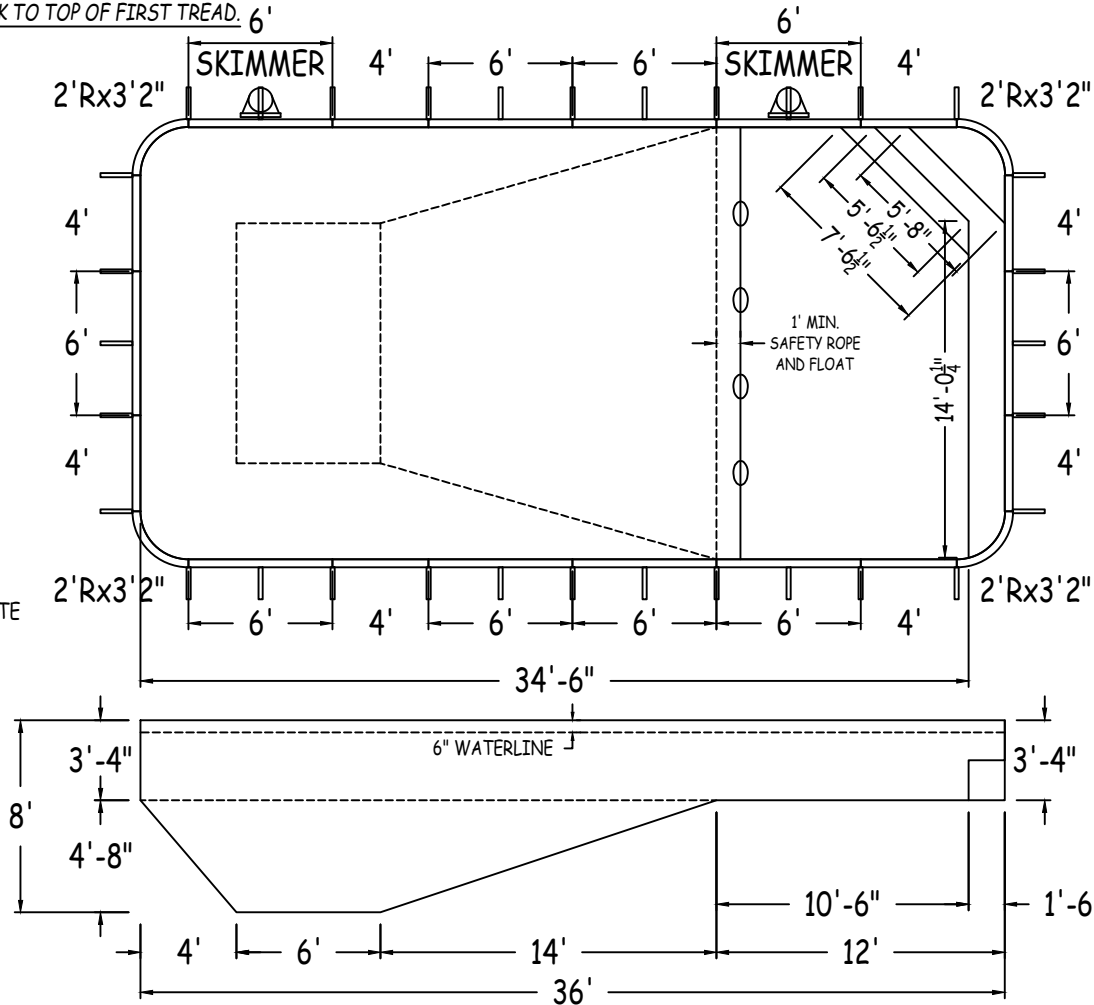


IN ACCORDANCE WITH ANSI/APSP/ICC-5 2011, THE INSTALLER IS RESPONSIBLE FOR PLACING ONE SKIMMER FOR EVERY 800 SQUARE FEET OF SURFACE AREA AND ONE RETURN FOR EVERY 300 SQUARE FEET OF SURFACE AREA.

STEP RISERS MUST NOT EXCEED A MAXIMUM HEIGHT OF 12".  
 THE TOP RISER MUST NOT EXCEED A MAXIMUM HEIGHT OF 12"  
 FROM TOP OF FINISHED DECK TO TOP OF FIRST TREAD. 6'



NOTE:  
 STEP & BENCH ARE CONCRETE  
 TO BE POURED BY BUILDER.



STEP DETAIL  
 R1=10" T1=24"  
 R2=10" T2=12"  
 R3=10" T3=12"  
 R4=10"

BENCH DETAIL  
 R1=20" T1=18"  
 R2=20"



<b>GRAPHHEX</b> POOL SYSTEMS	<b>RECTANGLE 2FT RAD 18-0 x 36-0</b>			
	42" FIXED POLYMER PANELS	PERIMETER: 104'-7"	VOLUME (US Gal): 21200	
DWG#: 2022-PPL-04762	SURFACE (ft²): 645	VOLUME (Liters): 80200	DATE: 2/1/2022	DSR:
KIT#: CUSTOMKIT	COVER (ft²): 760	SCALE: 1/8" = 1'-0"		



DIVING/SLIDING EQUIPMENT SHALL BE DESIGNED FOR SWIMMING POOLS AND SHALL BE INSTALLED IN ACCORDANCE WITH THE DIVING/SLIDING EQUIPMENT MANUFACTURER'S SPECIFICATIONS. PLEASE CONTACT THE DIVING/SLIDING EQUIPMENT MANUFACTURER FOR THEIR SPECIFICATIONS.

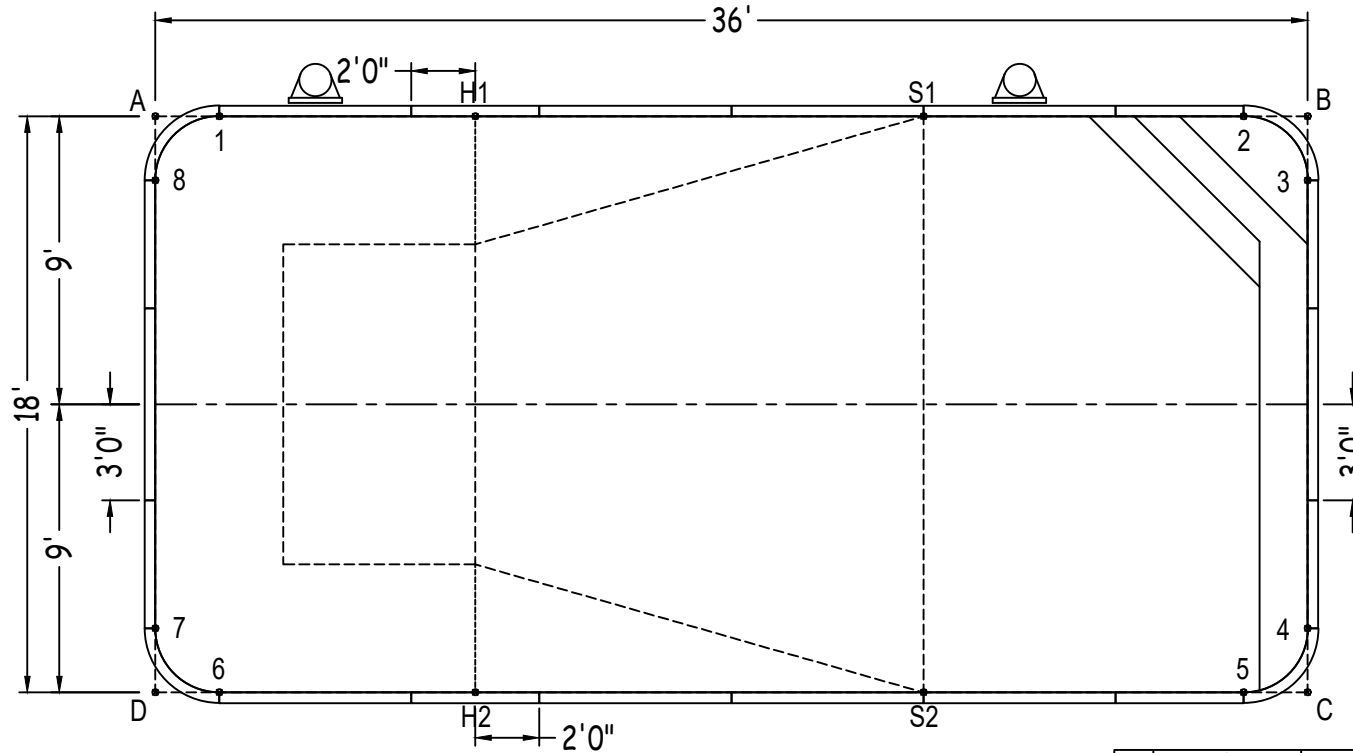
CUSTOMER: PENGUIN POOL  
 JOB NAME: PENGUIN POOLS 18\*36

ALL ASPECTS OF THIS DRAWING COMPLIES WITH ANSI/APSP/ICC-5 2011 AND 2015 ISPSC

**RECTANGLE**

Diagonals	1 to 2	32'-0"	2 to 3	2'-10"	3 to 5	16'-1 1/2"	4 to 8	38'-7 1/2"
S1 to S2	1 to 3	34'- 3/4"	2 to 4	16'-1 1/2"	3 to 6	37'-7"	5 to 6	32'-0"
H1 to H2	1 to 4	37'-7"	2 to 5	18'-0"	3 to 7	38'-7 1/2"	5 to 7	34'- 3/4"
S1 to H1	1 to 5	36'-8 1/2"	2 to 6	36'-8 1/2"	3 to 8	36'-0"	5 to 8	37'-7"
S2 to H2	1 to 6	18'-0"	2 to 7	37'-7"	4 to 5	2'-10"	6 to 7	2'-10"
S1 to H2	1 to 7	16'-1 1/2"	2 to 8	34'- 3/4"	4 to 6	34'- 3/4"	6 to 8	16'-1 1/2"
H1 to S2	1 to 8	2'-10"	3 to 4	14'-0"	4 to 7	36'-0"	7 to 8	14'-0"

		Base
Part number	Description	QTY
GPG-ST0720000X	6'	8
GPG-ST0720000*	6' SKIMMER	2
GPG-ST0480000X	4'	8
GPG-CN0380240X	2'Rx3'2"	4
Brace	Brace	32
PPC-HWNFP03-25	QUICK LOCK FASTENER PKG (25)	8
PPC-HW101	HDR PKG N/B (35) 3/8"x16x1" ZP G2	1
IPC-STKPK25	REBAR STAKE 18" 25PC	3



	A	B	C	D
1	2'-0"	34'-0"	38'-5 3/4"	18'-1 1/4"
2	34'-0"	2'-0"	18'-1 1/4"	38'-5 3/4"
3	36'- 3/4"	2'-0"	16'-0"	39'-4 3/4"
4	39'-4 3/4"	16'-0"	2'-0"	36'- 3/4"
5	38'-5 3/4"	18'-1 1/4"	2'-0"	34'-0"
6	18'-1 1/4"	38'-5 3/4"	34'-0"	2'-0"
7	16'-0"	39'-4 3/4"	36'- 3/4"	2'-0"
8	2'-0"	36'- 3/4"	39'-4 3/4"	16'-0"
S2	30'-0"	21'-7 1/2"	12'-0"	24'-0"
S1	24'-0"	12'-0"	21'-7 1/2"	30'-0"
H2	20'-7"	31'-7 1/2"	26'-0"	10'-0"
H1	10'-0"	26'-0"	31'-7 1/2"	20'-7"
A	-	36'-0"	40'-3"	18'-0"

RECTANGLE 2FT RAD 18-0 X 36-0

DWG #: 2022-PPL-04762

DATE: 2/1/2022

SHEET: 2 OF 2