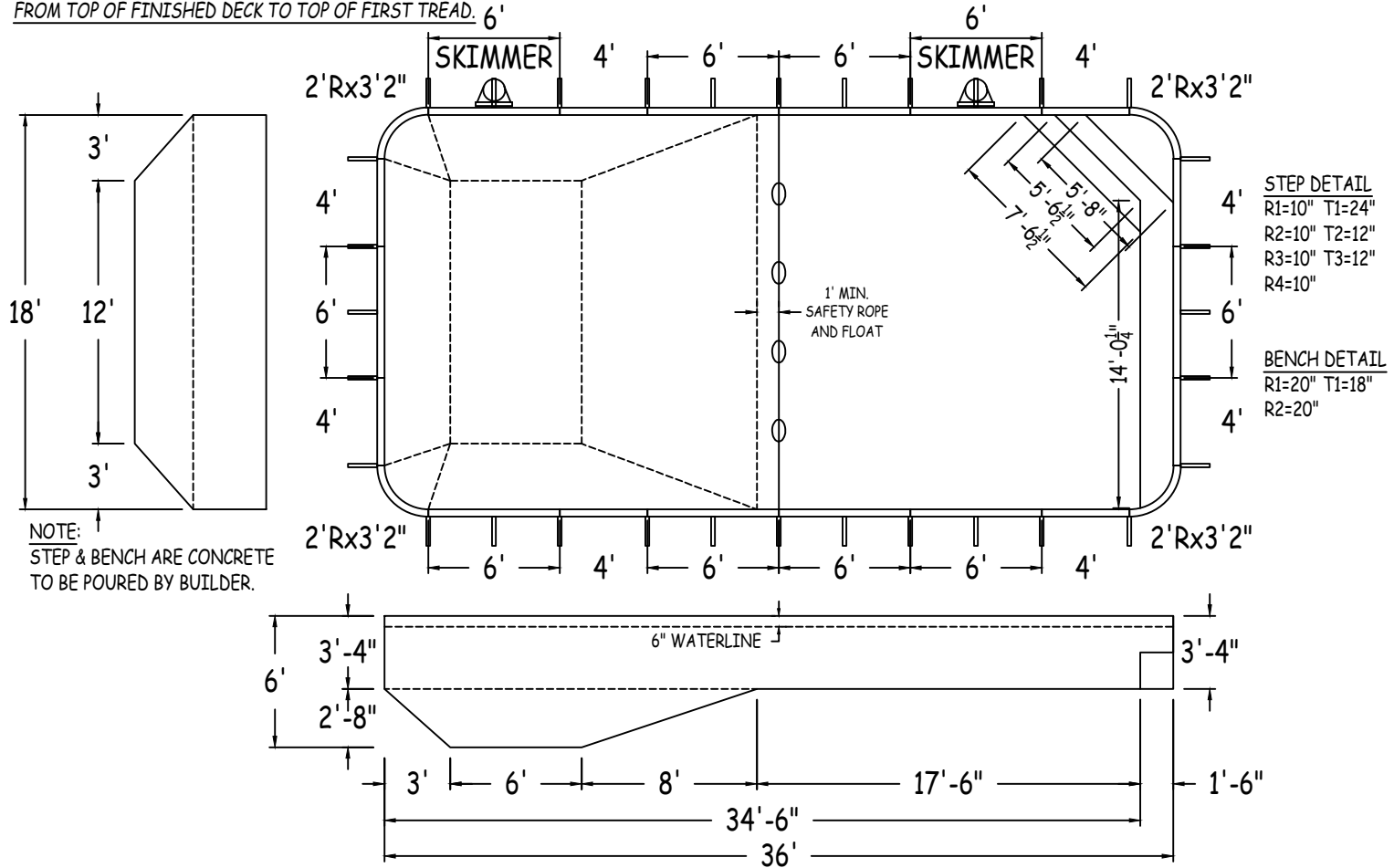


IN ACCORDANCE WITH ANSI/APSP/ICC-5 2011, THE INSTALLER IS RESPONSIBLE FOR PLACING ONE SKIMMER FOR EVERY 800 SQUARE FEET OF SURFACE AREA AND ONE RETURN FOR EVERY 300 SQUARE FEET OF SURFACE AREA.

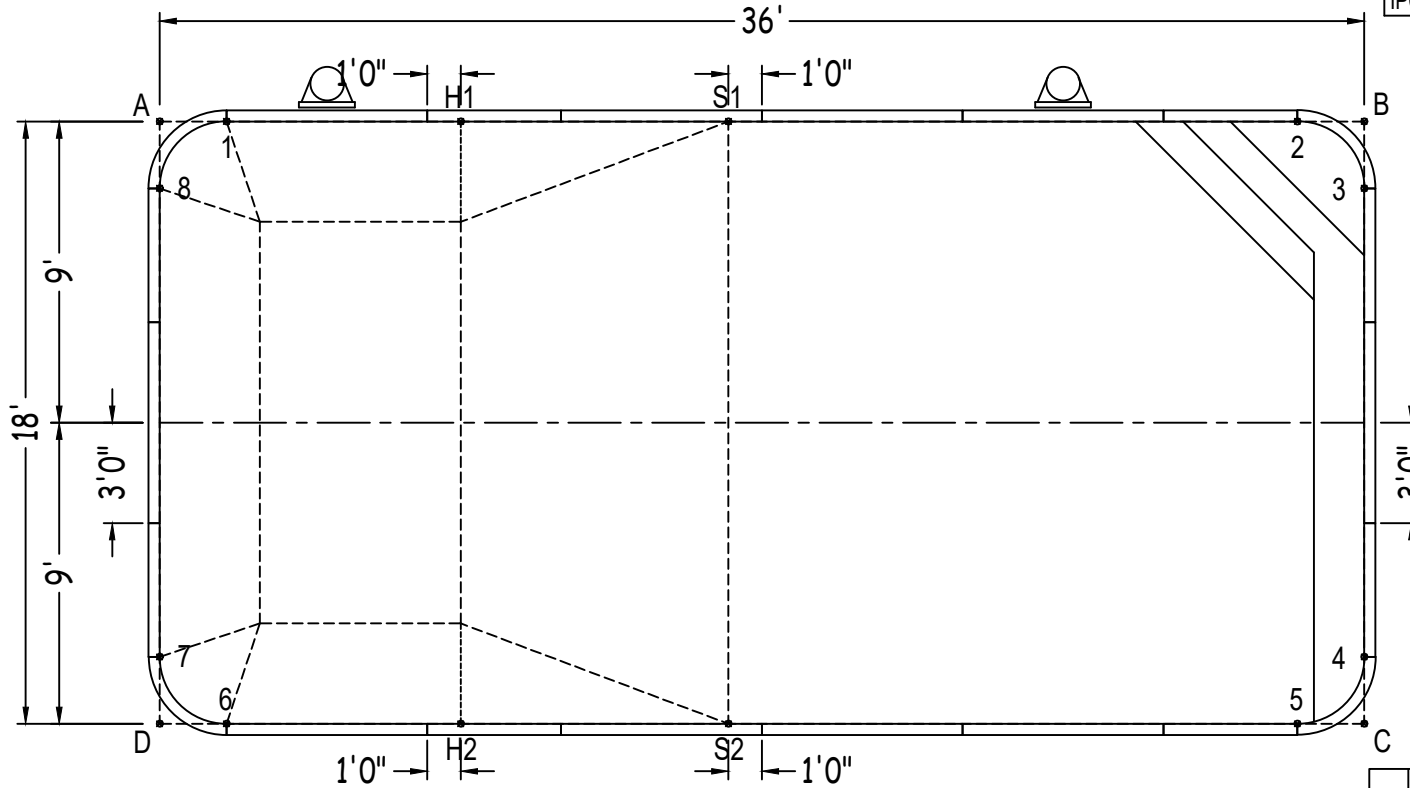
STEP RISERS MUST NOT EXCEED A MAXIMUM HEIGHT OF 12".  
 THE TOP RISER MUST NOT EXCEED A MAXIMUM HEIGHT OF 12"  
 FROM TOP OF FINISHED DECK TO TOP OF FIRST TREAD. 6'



|   |                               |                |                                     |   |   |              |         |
|---|-------------------------------|----------------|-------------------------------------|---|---|--------------|---------|
| <b>GRAPHHEX</b><br>POOL SYSTEMS<br>42" FIXED POLYMER PANELS | RECTANGLE 2FT RAD 18-0 x 36-0 |                | ALWAYS ENTER POOL<br><br>Foot First | NON-DIVING POOL<br>USE OF DIVING EQUIPMENT IS PROHIBITED                      | CUSTOMER: PENGUIN POOL<br>JOB NAME: GELIN |              |         |
|   | DWG#:                         | 2022-PPL-04601 |                                     |   |   | PERIMETER:   | 104'-7" |
| KIT#:   | CUSTOMKIT                     | COVER (ft²):   | 760                                 | DATE:   | 1/31/2022                                 | DSR:         |         |
|   |                               | SURFACE (ft²): | 645                                 | VOLUME (Liters):  |   | 67700        |         |
|   |                               | LINER (ft²):   | 621                                 | SCALE:  |   | 1/8" = 1'-0" |         |
|   |                               |                |                                     | ALL ASPECTS OF THIS DRAWING COMPLIES WITH ANSI/APSP/ICC-5 2011 AND 2015 ISPSC |   |              |         |
| <b>RECTANGLE</b>  |                               |                |                                     | SHEET: 1 OF 2   |   |              |         |

|           |            |           |            |            |            |            |           |            |            |
|-----------|------------|-----------|------------|------------|------------|------------|-----------|------------|------------|
| Diagonals | 1 to 2     | 32'-0"    | 2 to 3     | 2'-10"     | 3 to 5     | 16'-1 1/2" | 4 to 8    | 38'-7 1/2" |            |
| S1 to S2  | 1 to 3     | 34'- 3/4" | 2 to 4     | 16'-1 1/2" | 3 to 6     | 37'-7"     | 5 to 6    | 32'-0"     |            |
| H1 to H2  | 1 to 4     | 37'-7"    | 2 to 5     | 18'-0"     | 3 to 7     | 38'-7 1/2" | 5 to 7    | 34'- 3/4"  |            |
| S1 to H1  | 8'-0"      | 1 to 5    | 36'-8 1/2" | 2 to 6     | 36'-8 1/2" | 3 to 8     | 36'-0"    | 5 to 8     | 37'-7"     |
| S2 to H2  | 8'-0"      | 1 to 6    | 18'-0"     | 2 to 7     | 37'-7"     | 4 to 5     | 2'-10"    | 6 to 7     | 2'-10"     |
| S1 to H2  | 19'-8 1/4" | 1 to 7    | 16'-1 1/2" | 2 to 8     | 34'- 3/4"  | 4 to 6     | 34'- 3/4" | 6 to 8     | 16'-1 1/2" |
| H1 to S2  | 19'-8 1/4" | 1 to 8    | 2'-10"     | 3 to 4     | 14'-0"     | 4 to 7     | 36'-0"    | 7 to 8     | 14'-0"     |

|                |                                   | Base |
|----------------|-----------------------------------|------|
| Part number    | Description                       | QTY  |
| GPG-ST0720000X | 6'                                | 8    |
| GPG-ST0720000* | 6' SKIMMER                        | 2    |
| GPG-ST0480000X | 4'                                | 8    |
| GPG-CN0380240X | 2'Rx3'2"                          | 4    |
| Brace          | Brace                             | 32   |
| PPC-HWNFP03-25 | QUICK LOCK FASTENER PKG (25)      | 8    |
| PPC-HW101      | HDR PKG N/B (35) 3/8"x16x1" ZP G2 | 1    |
| IPC-STKPK25    | REBAR STAKE 18" 25PC              | 3    |



|    | A          | B          | C          | D          |
|----|------------|------------|------------|------------|
| 1  | 2'-0"      | 34'-0"     | 38'-5 3/4" | 18'-1 1/4" |
| 2  | 34'-0"     | 2'-0"      | 18'-1 1/4" | 38'-5 3/4" |
| 3  | 36'- 3/4"  | 2'-0"      | 16'-0"     | 39'-4 3/4" |
| 4  | 39'-4 3/4" | 16'-0"     | 2'-0"      | 36'- 3/4"  |
| 5  | 38'-5 3/4" | 18'-1 1/4" | 2'-0"      | 34'-0"     |
| 6  | 18'-1 1/4" | 38'-5 3/4" | 34'-0"     | 2'-0"      |
| 7  | 16'-0"     | 39'-4 3/4" | 36'- 3/4"  | 2'-0"      |
| 8  | 2'-0"      | 36'- 3/4"  | 39'-4 3/4" | 16'-0"     |
| S2 | 24'-9"     | 26'-2"     | 19'-0"     | 17'-0"     |
| S1 | 17'-0"     | 19'-0"     | 26'-2"     | 24'-9"     |
| H2 | 20'-1 1/2" | 32'-5 1/2" | 27'-0"     | 9'-0"      |
| H1 | 9'-0"      | 27'-0"     | 32'-5 1/2" | 20'-1 1/2" |
| A  | -          | 36'-0"     | 40'-3"     | 18'-0"     |

RECTANGLE 2FT RAD 18-0 X 36-0

DWG #: 2022-PPL-04601

DATE: 1/31/2022

SHEET: 2 OF 2