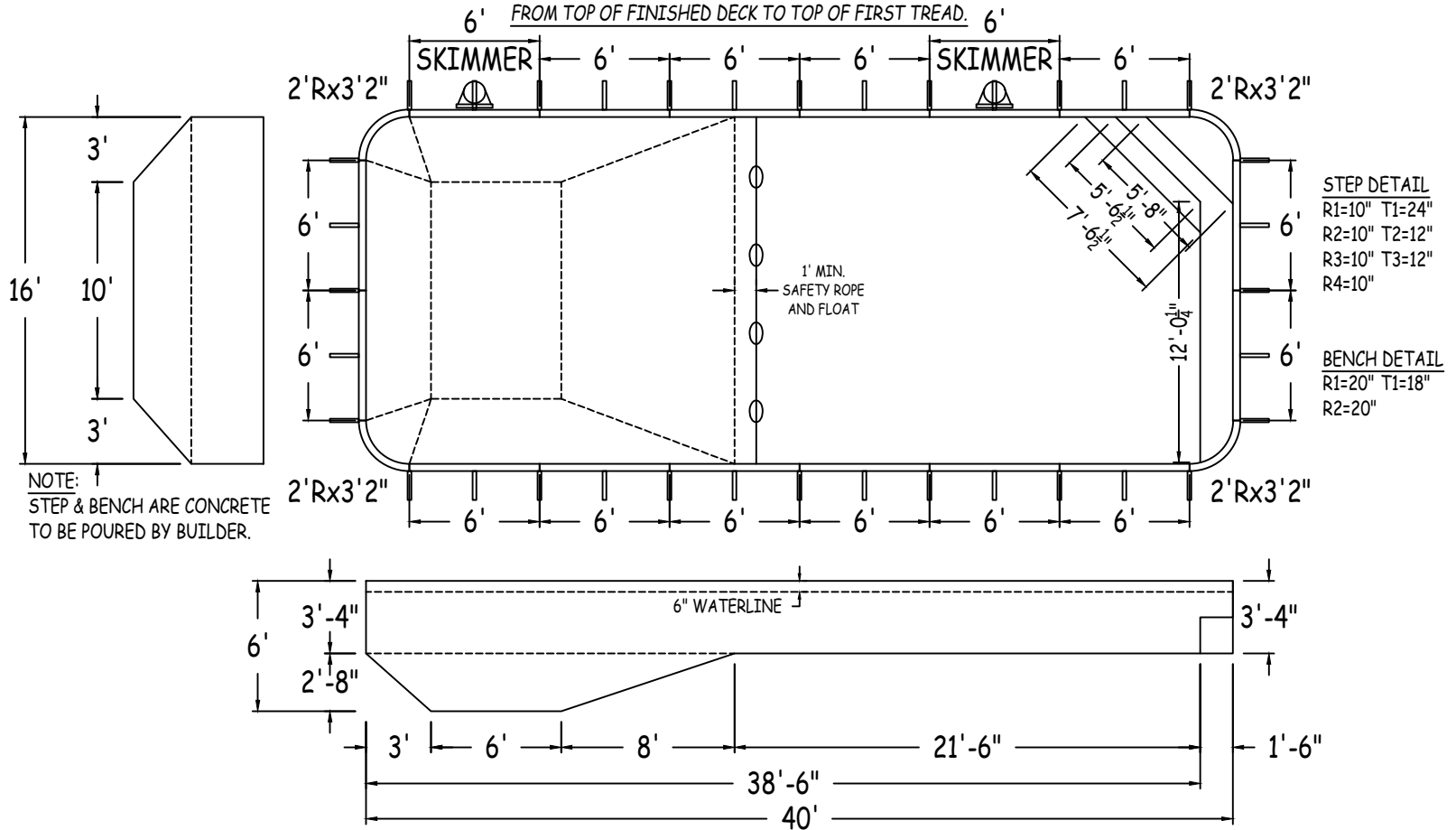


IN ACCORDANCE WITH ANSI/APSP/ICC-5 2011, THE INSTALLER IS RESPONSIBLE FOR PLACING ONE SKIMMER FOR EVERY 800 SQUARE FEET OF SURFACE AREA AND ONE RETURN FOR EVERY 300 SQUARE FEET OF SURFACE AREA.

STEP RISERS MUST NOT EXCEED A MAXIMUM HEIGHT OF 12".
 THE TOP RISER MUST NOT EXCEED A MAXIMUM HEIGHT OF 12"
 FROM TOP OF FINISHED DECK TO TOP OF FIRST TREAD. 6'



GRAPHHEX POOL SYSTEMS	RECTANGLE 2FT RAD 16-0 x 40-0			
	42" FIXED POLYMER PANELS	PERIMETER: 108'-7"	VOLUME (US Gal): 17700	
DWG#: 2022-PPL-04820	SURFACE (ft²): 637	VOLUME (Liters): 67000	DATE: 2/1/2022	DSR:
KIT#: CUSTOMKIT	COVER (ft²): 756	SCALE: 1/8" = 1'-0"		

ALWAYS ENTER POOL

NON-DIVING POOL

USE OF DIVING EQUIPMENT IS PROHIBITED

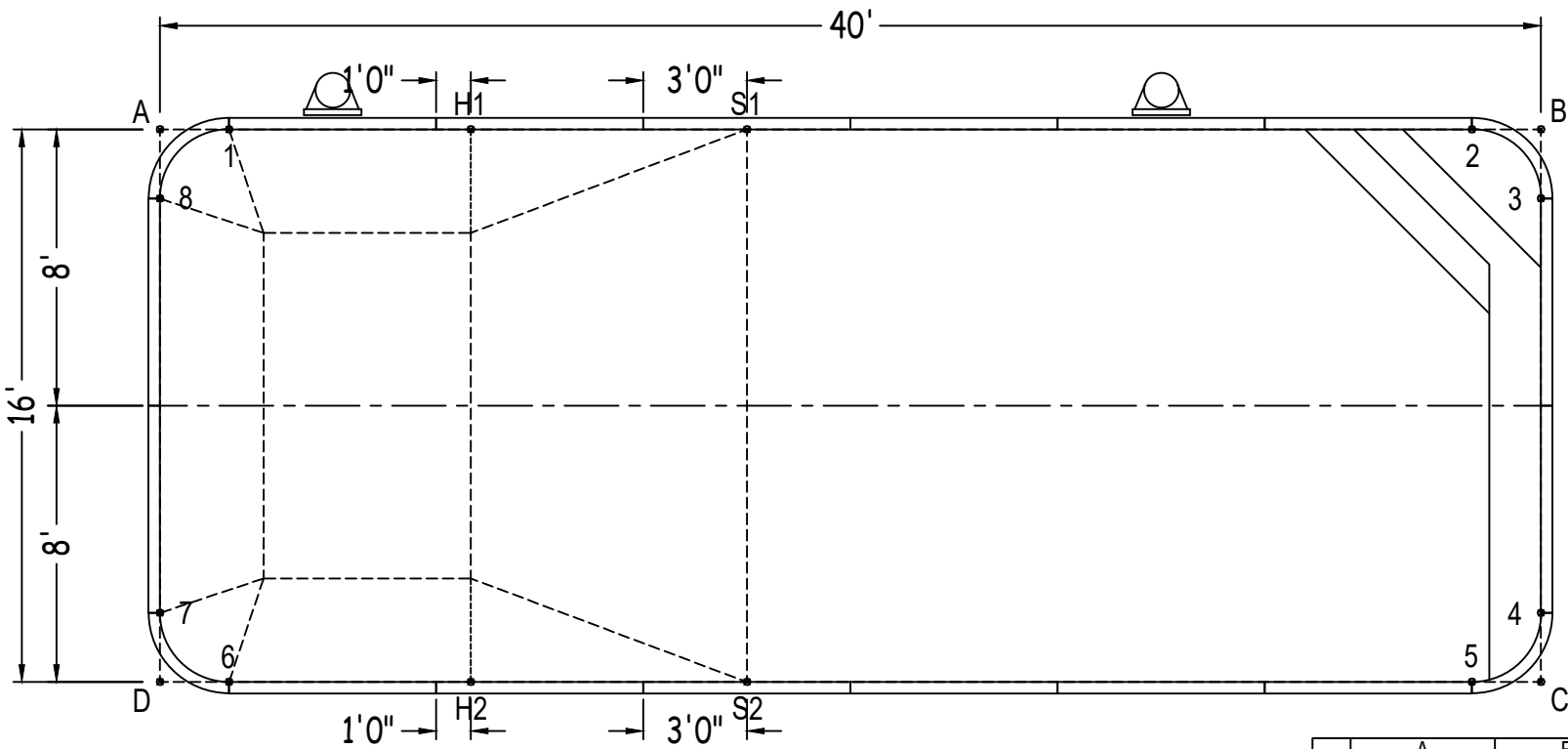
ALL ASPECTS OF THIS DRAWING COMPLIES WITH ANSI/APSP/ICC-5 2011 AND 2015 ISPSC

CUSTOMER: PENGUIN POOL
 JOB NAME: PENGUIN POOL

RECTANGLE

Diagonals	1 to 2	36'-0"	2 to 3	2'-10"	3 to 5	14'-1 3/4"	4 to 8	41'-9 1/4"
S1toS2	1 to 3	38'- 3/4"	2 to 4	14'-1 3/4"	3 to 6	40'-6"	5 to 6	36'-0"
H1toH2	1 to 4	40'-6"	2 to 5	16'-0"	3 to 7	41'-9 1/4"	5 to 7	38'- 3/4"
S1toH1	1 to 5	39'-4 3/4"	2 to 6	39'-4 3/4"	3 to 8	40'-0"	5 to 8	40'-6"
S2toH2	1 to 6	16'-0"	2 to 7	40'-6"	4 to 5	2'-10"	6 to 7	2'-10"
S1toH2	1 to 7	14'-1 3/4"	2 to 8	38'- 3/4"	4 to 6	38'- 3/4"	6 to 8	14'-1 3/4"
H1toS2	1 to 8	2'-10"	3 to 4	12'-0"	4 to 7	40'-0"	7 to 8	12'-0"

		Base
Part number	Description	QTY
GPG-ST0720000X	6"	14
GPG-ST0720000*	6" SKIMMER	2
GPG-CN0380240X	2"Rx3'2"	4
Brace	Brace	36
PPC-HWNFP03-25	QUICK LOCK FASTENER PKG (25)	9
PPC-HW101	HDR PKG N/B (35) 3/8"x16x1" ZP G2	2
IPC-STKPK25	REBAR STAKE 18" 25PC	3



	A	B	C	D
1	2'-0"	38'-0"	41'-2 3/4"	16'-1 1/2"
2	38'-0"	2'-0"	16'-1 1/2"	41'-2 3/4"
3	40'- 1/2"	2'-0"	14'-0"	42'-4 1/2"
4	42'-4 1/2"	14'-0"	2'-0"	40'- 1/2"
5	41'-2 3/4"	16'-1 1/2"	2'-0"	38'-0"
6	16'-1 1/2"	41'-2 3/4"	38'-0"	2'-0"
7	14'-0"	42'-4 1/2"	40'- 1/2"	2'-0"
8	2'-0"	40'- 1/2"	42'-4 1/2"	14'-0"
S2	23'-4 1/4"	28'- 1/4"	23'-0"	17'-0"
S1	17'-0"	23'-0"	28'- 1/4"	23'-4 1/4"
H2	18'-4 1/4"	34'-10 3/4"	31'-0"	9'-0"
H1	9'-0"	31'-0"	34'-10 3/4"	18'-4 1/4"
A	-	40'-0"	43'-1"	16'-0"

RECTANGLE 2FT RAD 16-0 X 40-0

DWG #: 2022-PPL-04820

DATE: 2/1/2022

SHEET: 2 OF 2